

# My School Phone

It's more than just a phone



# PSTN Switch-Off

## What this means. What you should do

- The copper-based phone network is being decommissioned 2024/2025 (PSTN Switch-off)
- All non-VoIP phone systems will need upgrading to VoIP. Or lose ability to make & receive calls
- Check now to see if your school's phone system will need upgrading to VoIP. [Here's how](#)
- Check now to see when the [copper network](#) will be switched off in your area
- Visit Schools Broadband [PSTN Switch-Off Page](#)



# My School Phone

Safe, secure and compliant

- Everyone has unique communication requirements, especially schools
- My School Phone is designed for the school environment
- Tailored & bespoke solutions for individual school needs – however unique
- Features designed hand-in-hand with School Business Managers, Head Teachers & IT professionals



# My School Phone

## More than just a phone

We understand the need for:

- Environmental risk assessment and reduction
- Policy compliance and support
- Emergency planning and lockdown procedures
- Evacuations and invacuations
- Time management and efficiency improvement
- Accessibility and productivity enhancement
- Bomb threat alerts, alarms and safety measures
- Support for the welfare of children and staff
- Martyn's Law



# My School Phone

## Specific features just for schools

- Security lockdown for intruder alerts
- Paging alerts for emergencies and public announcements
- Dedicated support lines for students
- Detailed call reporting with insights
- Night mode for optimized functionality
- Student/parent welfare support lines
- Conference calls with PIN codes for secure communication with children on EHCP (Education & Health Care Plans)



# My School Phone

## Supporting multiple policies

- The Management of Health and Safety at Work Regulations 1999
- The Health and Safety at Work etc. Act 1974
- Regulatory Reform (Fire Safety) Order 2005
- DfE (2018) 'Health and safety: responsibilities and duties for schools'
- DfE (2015) 'Emergency planning and response'
- DfE (2014) 'Fire safety in new and existing school buildings'
- DfE (2019) 'School and college security'
- National Counter Terrorism Security Office (2015) 'Developing Dynamic Lockdown Procedures'
- Martyn's Law – The new Protect Duty

# My School Phone

## Ensuring safety for SEN students and schools

Ideal for risk assessing and keeping all pupils and staff safe in emergencies

- **Paging** – Facilitates organisation-wide announcements, department announcements or individual rooms (or a combination of all three).  
PA Function satisfies Ofsted guidance for providing audible warning of a lock-down event
- **Do Not Disturb (DND)** - Allows disablement of incoming calls & flashing light. Useful in one-to-one sessions for children with Autism or in sensory rooms.  
Functionality is automatically overridden in event of emergencies.



# My School Phone

## Common Communication Challenges

- Lockdown Events
- Emergency Planning
- Call Restrictions
- Onsite Phone Systems
- Multiple Vendors
- Legacy Kit
- Budgetary Concerns
- Hefty Maintenance Costs
- No call recording to retain key information
- Future proofing
- Call out charges
- Cannot make any changes
- No groups
- No support for remote workers
- No reporting tools





# My School Phone

## Puts you in control

- Easy to use
- Highly resilient with failover options
- Assured call quality
- Call capturing retains sensitive data
- Simple Admin & User Portal
- Teams Integration
- Flexible Number Presentation
- Handset, Mobile, Softphone Choices
- 24/7 support built for education
- Flexible licenses, from Classroom to Reception



# My School Phone

For schools of all sizes

- Smart Voicemail delivery (VM to Email)
- Set Holiday & INSET dates in advance
- Staff Room door entry integration
- Advanced fraud protection
- Advanced call routing
- Missed & unreturned call tracking
- MIS Integration – in Development



# My School Phone

## Insights Reporting Suite

- Inclusive Reporting Package
- Comprehensive Analysis
  - DDI level
  - Unreturned missed calls
  - Call volumes
  - Performance
  - Itemisation
  - DND

- Favourites
- Scheduling
- Email Delivery

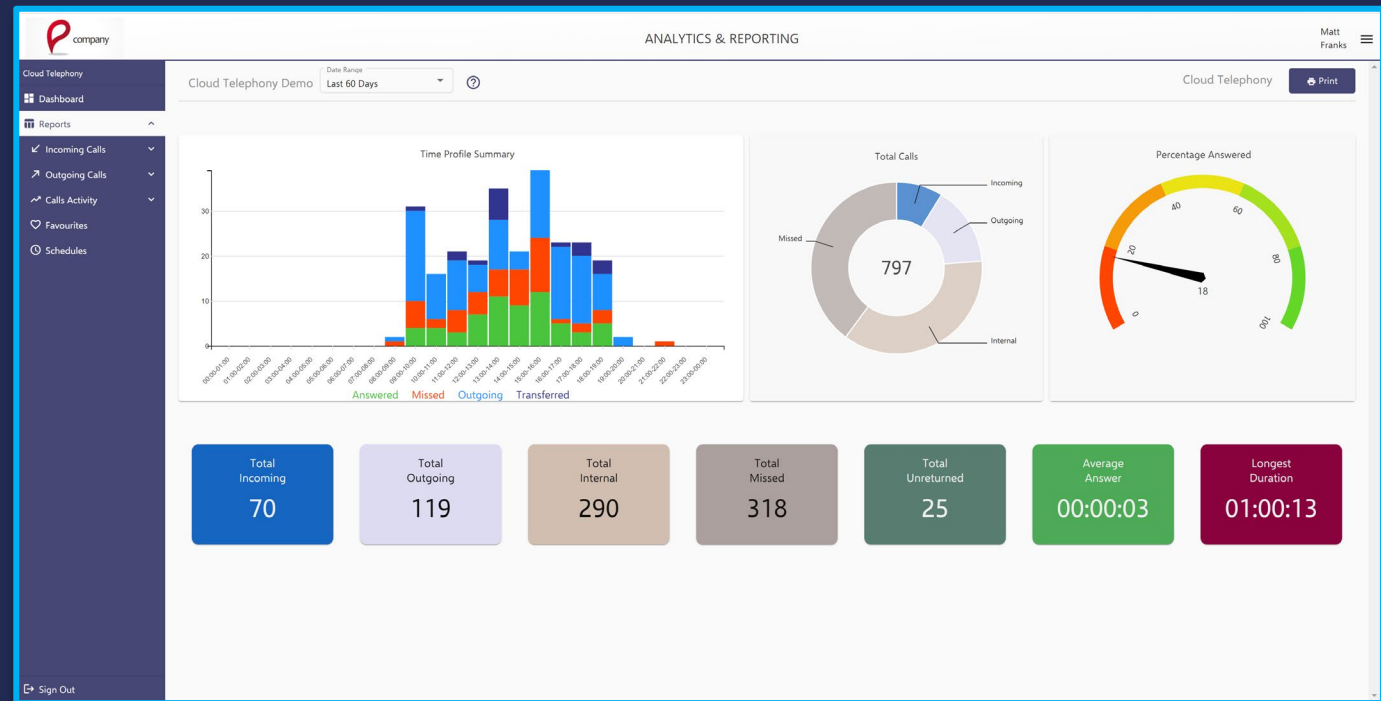
New



# My School Phone

## Insights Reports

- Predefined popular reports
- Report on incoming, outgoing and missed calls
- Export to CSV or PDF
- Save favourite reports
- Create schedules for automatic delivery to email




# My School Phone

Improving safeguarding response times  
in an emergency

- Safety of children & staff in lockdowns is paramount
- Address emergency planning - Have the conversation
- Refer to real-life examples (see below)
- Improving security response times
- Improves safeguarding and welfare of children
- Include My School Phone as part of your planning

[Dog Attack](#) | [Intruder](#) | [Knife Attack](#) | [School Disturbance](#)



Different Sound  
& Protocol for  
Evacuation &  
Invacuation

# My School Phone

Preparing for lockdown events

- **Security Alerts** - Alarm plays through all, zoned or specific area handset speakers
- **Paging Alerts** - For emergency & public announcements
- **Internal Chat Messaging** - For discrete communication



**No  
Additional  
Costs**



# Regulatory Requirements

## Useful links and tips

- ✓ Know what to do in the event of an incident, or potential incident
- ✓ Emergency plans should form part of your security policy which should complement your safeguarding policy
- ✓ Your safeguarding policy forms part of the KCSiE regulatory requirements and should be part of your suite of policies to ensure the health, safety and well-being of students and staff
- ✓ A full list of emergency considerations for planning purposes can be found at [Emergency Planning and Response for Education DfE Guidance](#)

# Preparing for a Lockdown

## Planning considerations checklist

- ✓ Can your school achieve a full or partial lockdown on the school building and environment?
- ✓ Can you communicate quickly and effectively with students & staff what is happening in the initial stages of an emergency?
- ✓ Have all your staff been trained in lockdown procedures?
- ✓ Do they know who to contact, and how, including how to raise an alarm to alert staff and students?
- ✓ Do you regularly test and exercise plans with staff?
- ✓ Do you regularly review and refresh your training?

[Self-Assessment Emergency Incident Planning Checklist](#)



# Questions & Feedback

The iSPAs  
7 x ISPA Award  
**WINNER**

